



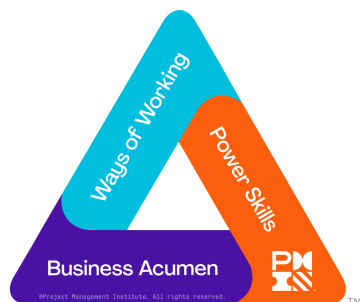
March 2024 | Volume 4 | Issue 2

## Message from the Board

Dear PMI Members, Partners, and Friends,

We are thrilled to unveil the **PMI Chapter's strategy for 2024** and introduce two of our key cultural values - "**Make It Easy**" and "**Be Welcoming**". This value reflects our commitment to simplify processes and make it easy for our members to engage in activities that support their professional growth, as well as our dedication to creating a welcoming environment where everyone feels valued and supported. We will communicate further about other cultural values and our strategy linked to them over time. We have planned a series of events and engagements designed to connect with our members, partners, and friends to offer more opportunities for interaction and collaboration. Every newsletter, we will provide information on the upcoming events in the plan.

As part of this strategy, we have launched the **PMI LX Buddy Program**, specifically to provide guidance to new members and ensure their first experience is productive and fulfilling. We aim to support all parts of our community, including students, young professionals, and mature professionals, through these programs and events.



In the **PMI Global 2023 PMI Pulse of the Profession** it is highlighted the importance for both new and seasoned project managers in developing **power skills**: "Nine in 10 respondents to the PMI Annual Global Survey on Project Management agree that **power skills** help them work smarter, while eight in 10 also agree that their organization places value on all employees possessing power skills."

Over many years, **Jas Madhur** has been a dedicated supporter of the chapter, and many of you have participated in the Campfires over the years. The **Campfires** have been a key part of our professional development activity and have provided a trusted and safe space for our members to share their experiences and discuss their challenges. During 2024, we are developing and expanding the **Campfires** to offer them to a larger group, expanding from 8-10 to 15-20, reflecting the cross-section of all our members, and focusing the content around key topics related to **power skills**. We also aim to offer the Campfires and topics to companies and project professionals outside the PMI Luxembourg Chapter.

We will also collect regular **feedback** from our members and reinforce communication through our social media channels so that everyone stays up to date with Chapter news and events. We look forward to communicating further about our cultural values and our chapter's plan related to the PMI Next strategy linked to them. Thank you for being a part of our community.

PMI Luxembourg Chapter

---



## Campfire with Jas

Group mentoring activity

## Campfire with Jas


Our first Campfire of the series will be on the 4th of April 2024, discussing conflict resolution.

**"Navigating Storms Together: Conflict Resolution in Project Management."**

 When: 4 April at 17:30

 Where: Maison Schauwenburg, 7 Beim Schloss 8058 Bertrange

Registration will be opened soon.

 A recent KPMG survey identified internal conflicts as being responsible, in 31% of cases, for the project failing to achieve its full potential. The workshop will emphasize the campfire approach, emphasizing storytelling, shared experiences, and collaborative learning. We hope to welcome a broad cross-section of our community, who are interested in the topic and training in the **Campfire** approach.

---



# CALENDAR OF THE EVENTS 2024\*

## APRIL

PMI Member Development workshop

## APRIL

Development workshop AI & Project Management

## MAY

Digitilization of Supply Chain Operations & AI adoption

## MAY

Campfire Event

## JUNE

Project Management & Quality Assurance

## SEPTEMBER

Campfire Event

## SEPTEMBER

Networking Event

## OCTOBER

Portfolio Project Management

## NOVEMBER

Campfire Event

## NOVEMBER

Project Management & Sports

## DECEMBER

PMI Luxembourg AGM



\*Subject to change



**New podcast episodes!**

**PM Untold: Building High Performing Team**

**with Geert Vercaeren**



Get ready to dive into the world of project and portfolio economy with an extraordinary guest on our upcoming episode! 🚀

🎧 In this episode, we talk with **Geert Vercaeren**, a senior business consultant and leadership coach with more than 25 years of experience in leading complex business transformation, organizational development, and HR transformation projects.

He is also the founder of the consulting company B15 and the author of "Humanizing Strategy: How to Master Emotions, Values, and Beliefs When You Execute Plans." Geert shares his journey from commercial engineering to consulting and provides insights into building a high-performing team and a real-life case study.

**PDU** offered for listening the episode.

Special thanks to all who made this Podcast and this episode possible: **Guangyu Fu**, **Ana Felisberto**, 🇪🇺 **Ditta Bezdán**, **Tim Gaens**, **Giuseppe DiMaria**, **Maria Hazir**, **Liz Hector**, **PMI Luxembourg Chapter** 🇪🇺, **PMI Belgium Chapter**, **PMI Netherlands Chapter**, **Geert Vercaeren**

## PM Untold: The Grey Zone: Where Project Management Meets Consulting

with **Grègor Nicolas**



🎧 Join us as we dive into "The Grey Zone: Where Project Management Meets Consulting" with our special guest, Grègor N.. With years of experience as a senior project manager and business consultant across diverse sectors, the visionary founder of Group Solutions, a consulting company dedicated to empowering organizations and individuals with top-tier project management and change management solutions. Have you ever encountered the intersection between project management and consulting?

It is indeed an intriguing space. In this episode, Grègor shares his remarkable journey from a junior consultant to spearheading multimillion-euro projects and discusses how to handle the situation when you're in the grey area between project management and consulting. Don't miss out on this enlightening conversation! Tune in now to gain exclusive insights from a seasoned professional who knows how to navigate the intricate intersection of project management and consulting.


**PDU** offered for listening the episode.

Special thanks to all who made this Podcast and this episode possible: **Ana Felisberto**, 🇪🇺 **Ditta Bezdán**, **Bálint Dudás**, **Tim Gaens**, **Giuseppe DiMaria**, **Guangyu Fu**, **Guzel Afanaseva**,



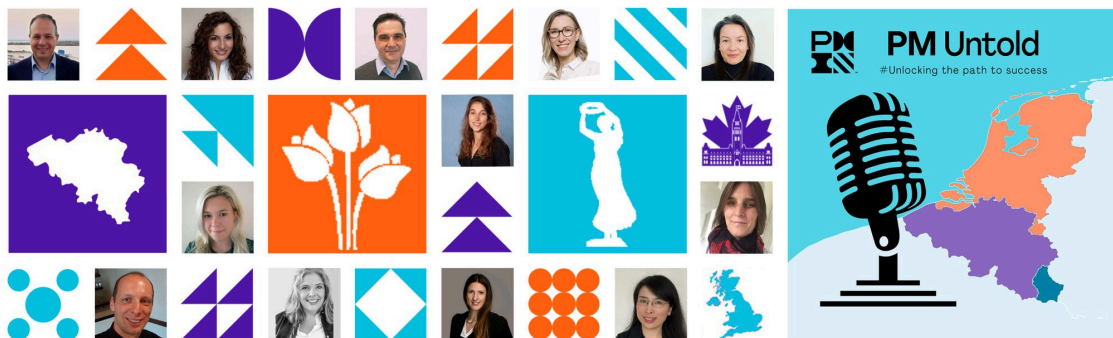
 Would you like to be a **Speaker in PM Untold Podcast**? Please contact us:  
[fu.communication@pmi.lu](mailto:fu.communication@pmi.lu)

## PM Untold Podcast Library

 Pilot episode: Project Sustainability with Olivier Lazar  
Episode #01: Emotional Intelligence with Natalie Boudou  
Episode #02: Project Management in Young Generation with Chris F. Kindermans  
Episode #3: Building High Performing Team with Geert Vercaeren  
Episode #4: The Grey Zone: Where Project Management meets Consulting with Grégor Nicolas



The team behind our podcast..



please join us to welcoming Ana!  
Are interested to our open opportunity?



Click to learn more...



Laila Lahham

## Managing Quality in AI systems projects

"Quality is not an ACT, it is a HABIT"  
-Aristotle-

AI systems projects have become integral to various industries, offering innovative solutions and driving advancements.

However, ensuring the quality of AI systems is crucial for their successful development and deployment. Effective quality management in AI projects involves a combination of best practices, methodologies, and ethical considerations. In this article, we explore key strategies to manage quality throughout the AI systems projects lifecycle.

by **Laila Munajed Lahham, PMP**  
Management Consultant and Trainer  
PMI Luxembourg Chapter Vice President and Secretary

## Chapter News

### Are you a new to Luxembourg Chapter? New Program for New Members!



The graphic features a portrait of Paul Scharfe on the left. On the right, the PMI Luxembourg logo is at the top. Below it, the text reads: "NEW PROGRAM FOR NEW MEMBERS!", "PMI LX Buddy", "with Paul Scharfe", and a silhouette of three people climbing a rock.

#### Welcome New Members! Navigate Your PMI Journey with a Personal Buddy!

We're excited at the PMI Luxembourg Chapter to launch PMI LX Buddy, a personalized program for our newly joined members, designed to empower your membership experience from day one. Your dedicated "Buddy," Paul Scharfe, will guide you on a customized 3-month journey, unlocking the full potential of your PMI membership.

#### Why join PMI LX Buddy?

- Looking where to start? Paul will help you understand our chapter's mission, activities, and the immense value you gain as a member.
- New to Luxembourg? Paul can connect you with a network of like-minded professionals, easing your transition into the local work environment.
- Want to know more about PDUs? Paul will guide you towards earning valuable Professional Development Units through PMI events and resources.

#### What does PMI LX Buddy offer?

- 1:1 Support Meeting: Get personalized guidance and address any questions you have.
- Engaging Activities: Dive into chapter events, workshops, and networking opportunities tailored to your interests.
- Expanded Network: Connect with industry professionals and build meaningful relationships within the Luxembourg Chapter.

Ready to embark on your PMI journey with a friendly guide? Sign up for the PMI LX Buddy program today! Contact us at [volunteers@pmi.lu](mailto:volunteers@pmi.lu)

**Get registered! Special offer for our Student community**



## PMI Global Summit Series Student Hackathon

As part of the Global Summit Series 2024 in Berlin, PMI is hosting a special university event.


Designed for any university student with an interest in project management, this all-day event offers the opportunity to learn from industry experts, build and practice hands-on skills, get career guidance, and network with peers and mentors.


**Get valuable training:** The first part of the hackathon will be dedicated to training students on project management concepts, resources, and tools, including cutting-edge topics like AI.

**Practice project management skills:** Students will be split into teams and work to apply project management concepts to real-world problems, developing and pitching a creative circular economy project to support urban innovation and a greener Berlin.

**Access career resources:** We'll provide PMI content and tools that can be used both in and after the event to support work and guide professional development.

**Expand your network:** Connect with and learn from like-minded peers, experienced project professionals, industry experts, and the PMI community throughout the day.

 **When:** 8 April 2024 from 9:00 AM to 5:30 PM

 **Where:** Berlin Congress Center

The **free hackathon spots** are limited.

[register here](#)

---

**The More You Give, The More You'll Get.  
VOLUNTEER WITH PMI.**



PROJECT MANAGEMENT IS ABOUT MUCH MORE THAN GANTT CHARTS AND ROLLING WAVE PLANNING.

**It's about people. Teamwork. Collaboration. Leadership, Motivation.**

AND AT PMI, PEOPLE ARE GENEROUS WITH THEIR TIME, TALENT, AND EXPERIENCE.

**Did you know that most of PMI's work is done by volunteers?**

PMI was founded by volunteers – people who wanted to enhance the profession of project management, share new ideas, and reap the benefits of expanding connections and career advancement opportunities.

**By sharing their time, experience and expertise, PMI volunteers:**

- **Develop** leadership and business skills by serving on our chapter board of directors or by taking part in local events and activities
- **Benefit** from a wide variety of educational, networking, and career-advancing opportunities
- **Build** professional networks and benefit from relationships with other project managers

**Join our team of volunteers.**

Through continued, active involvement in the profession, volunteers **sharpen** their existing skills while **learning** important leadership, collaboration, and team building techniques-allowing them to **gain experience** in new areas of practice. And the relationships they form can be of immense help throughout their careers.

Start learning and using new skills, meet terrific people, and take your own career to the next level!

**Make your career more fulfilling and productive by volunteering with PMI.**

## Call for volunteers



We are looking for several volunteers to join our **Communications team** and help us with our newsletter, social media, podcast production and website maintenance. If you're interested, please contact [volunteers@pmi.lu](mailto:volunteers@pmi.lu).

- ☒ Webmaster / Website Editor
- ☒ Digital marketing
- ☒ Content Creator
- ☒ Speaker for Podcast

[>> read more](#)



**Project  
Management  
Institute®  
Luxembourg**

Would you like to **advertise**  
with us?

This space is available for you.

[>> contact us](#)

## Ask us anything

Some of you asked us for a "questions & answers" column and so here it is! You can submit your questions using the below button (anonymously, if you wish). We will answer your questions in the upcoming newsletter issues.

[>> submit a question](#)



## One link to access all



Connect to all our communication channels  
in one click.



---

## Editorial Team

**Contributors:**  
Chitranshu MANDHAR  
Guzel AFANASEVA  
Nikhil KARNAM  
Janet FU  
Alfred Johnson

**Graphic Design & Visuals Editors:**  
Guzel AFANASEVA

**Technical Editor:**  
Guzel AFANASEVA

**Chief Editor:**  
Guzel AFANASEVA

[Give us feedback!](#)

---

Copyright © 2022 PMI Luxembourg | All rights reserved. | Contact: [newsletter@pmi.lu](mailto:newsletter@pmi.lu)



You've received this email because you've subscribed to our newsletter. No longer want to receive our newsletter? [Unsubscribe](#).

